

End

Welcome ! Tajimi Itinerary and Home Stay Tips

Contemporary Japan and Its Roots
IDS 360/460

◀▶

End

Tajimi May 22 - 24, 2012

- Yokoso! Welcome to Tajimi!
- In this presentation you'll meet our Tajimi "Boss," Kanako Shibata and many other great people who will make this a memorable part of your trip
- You'll see photos from our 2008 and 2010 trips
- You'll see a typical modern Japanese home and learn home stay tips
- Feel free to share this with your family and friends - it's on the web!

1

◀▶

End

May 22 - 24, 2012 Tajimi



Our team in Tajimi - Ryo, Kanako (The Boss), Iku and Masako - who are great hosts!

2

◀▶

End

Welcome to Tajimi



Welcome to the new Tajimi Train Station, complete with a fabulous ceramic mural by our host, Ikuhiko Shibata

3

◀▶

End

Host Families



We'll be greeted at the station by some of our host families who will stay with us for the afternoon and be our drivers.

4

◀▶

End

Tajimi



Here we are, waiting for others to arrive at the Gifu Museum of Modern Ceramic Art

5

◀▶

Museum of Modern Ceramic Art

End



With the museum in the foreground, you can see Tajimi spread across the hills in the background. Photo: C. Dole

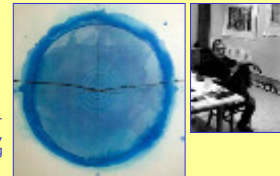
6



Exhibition Schedule

End

- Gallery I *Life Embraced Within* This new approach does not imitate any specific plant or animal but creates soft-curved works, which are abstract yet somehow suggestive of living matter.
- Gallery II *Shoichi Ida: Mastering Clay* (1941-2006) "Art is not making a beautiful surface, or drawing a realistic apple. Art is getting to an essence, reaching the senses." Painter, ceramist, printmaker, sculptor.



Shoichi Ida, Well From Karma - Trap in Echo #11, 1989, Color Etching

7



To Our Home Stays

End



After the tour by the museum's curator, we'll meet all the host families at Oribe Street, shop after shop of wonderful pottery.

8



Tajimi Home Stays

End



The home stay is one of the highlights of our visit to Tajimi. Kanako and Iku meet with some of the families to share your applications, self-introductions and the schedule with them. Photo: Kanako Shibata

9



Home Stays

End



Our Tajimi Boss, Kanako, kindly helped me create a photo tour of a modern Japanese home to help you prepare for your home stay.

10



Home Stays

End



Ramu-chan, their tiny family dog, greets us at the front window overlooking their garden.

11



Home Stays

End



Come on inside and remember to take off your shoes. There will be guest slippers just inside the door for you to use.

12



Home Stays

End



You'll probably stay in the tatami mat room, an all purpose family room and guest room. Remember to take off your slippers - socks only!

13



Home Stays

End



In the corner is the entertainment center with TV, DVD player, etc. The table was moved to the center and we enjoyed tea and sweets.

14



Home Stays

End



In the other corner is a desk and a space heater. We were here in March 2011 and it was cold.

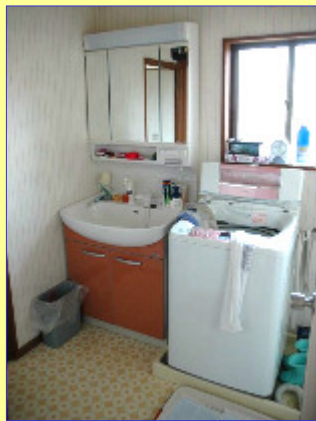
15



Home Stays

End

Baths are taken in the evening after dinner. Guests go first. Your dressing area usually includes the family washing machine. The bath is to the right and the kitchen is to the left.

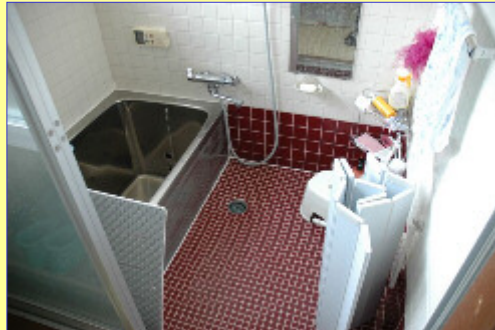


16



Home Stays

End



You wash first outside and get thoroughly clean. Then you step into the tub full of wonderful hot water. Do not pull the plug! Everyone uses that water.

17



Home Stays

End



Japanese kitchens are small and efficient. This is a very typical kitchen.

18



Home Stays

End



You may have breakfast at a table like this. Yes, you probably won't be sitting on the floor.

19



Tajimi

End



The next morning we'll tour the Kobei Gama Museum which honors Kato Takuo, a National Living Treasure, a sixth generation potter and Iku's uncle.

20



Tajimi

End



We'll see works that Kato Takuo created (left and above right), others that he collected from Persia, his climbing kiln and a marvelous garden near the galleries.

21



Factory Tour

End



You'll be fascinated by a tour of a company that creates ceramic table ware for Noritake, Disney and European designers.

22



Factory Tour

End



The owner will also show us the salesroom and the wide variety of beautiful items that they produce.

23



Tajimi

End



After enjoying our morning at the museum and factory, we'll have a delicious lunch at Iku's studio with some home stay moms.

24



Ceramics Adventure

End



Ikuhiko will give us a demonstration. Here he's throwing "off the block." Be prepared to be amazed!

25



Ceramics Adventure

End



After the demonstration, Iku will help each of us make a tea bowl.

26



Ceramics Adventure

End



Kanako and Masako will help us customize the special wooden box made to hold our tea bowl.

27



Ceramics Adventure

End



It's fun to watch everyone create their masterpieces and talk with the host moms. Here we've taken over Iku's sales area.

28



Ceramics Adventure

End



Before you leave, take time to look around the studio and grounds. Outside you'll see his shrine to the kami and his wife that guard his kiln and garden. Inside look up and say a little Thank You prayer to the small Shinto shrine in the studio.

29



Home Stays

End



Then it's time for your second night with your home stay family. Whether it's a table top barbecue or a sushi and beer feast, you'll enjoy an authentic Japanese family dinner with your new friends who are so generously sharing their home with you.



30



Home Stays

End



In 2010 the last day of our home stay was recycling day. It's quite a lesson in community cooperation. The families separate everything!

31



Home Stays

End



You begin your home stay with great unease and you leave not wanting to say good-bye. Be prepared for LOTS of photos.

32



Goodbye, Tajimi! It's been great!

End



33



Friday May 18, 2012

End

- Morning - all go to Chiyoda-ku
- Your choice of activities
 - Science Museum
 - National Museum of Modern Art
 - Crafts Museum

34



Friday May 18, 2012

End

- Afternoon - all go to Bunkyo-ku
- Your choice of activities
 - Koishikawa Garden
 - Tokyo Dome City
 - 50 restaurants, cafes and bars
 - 70 shops - fashion, baseball, general
 - Hero Action Show!

35



Saturday May 19, 2012

End

- Morning - all go to Ryogoku
 - Edo-Tokyo Museum for lecture and tour
- Lunch options - all go together
 - Edo-Tokyo Museum 7th floor restaurant
 - Sumo Hall food court

36



Saturday May 19, 2012

End

- Sumo Tickets - if available
 - 2,000 yen (\$25) may sell out by 8:00 AM
 - 3,500 yen (\$43.75)
 - Up to 8,200 yen (\$102.50)

37



Saturday May 19, 2012

End

- Afternoon options - we'll vote for two
 - Ginza - how the rich shop
 - Kappabashi - wholesale restaurant goods
 - Akihabara - electronics stores
 - Ueno Park and Ueno Shopping
 - Museums in park
 - Yodobashi Electronic goods - 7 floors
 - Mega Manga store, Totoro, Hello Kitty, etc.

38

